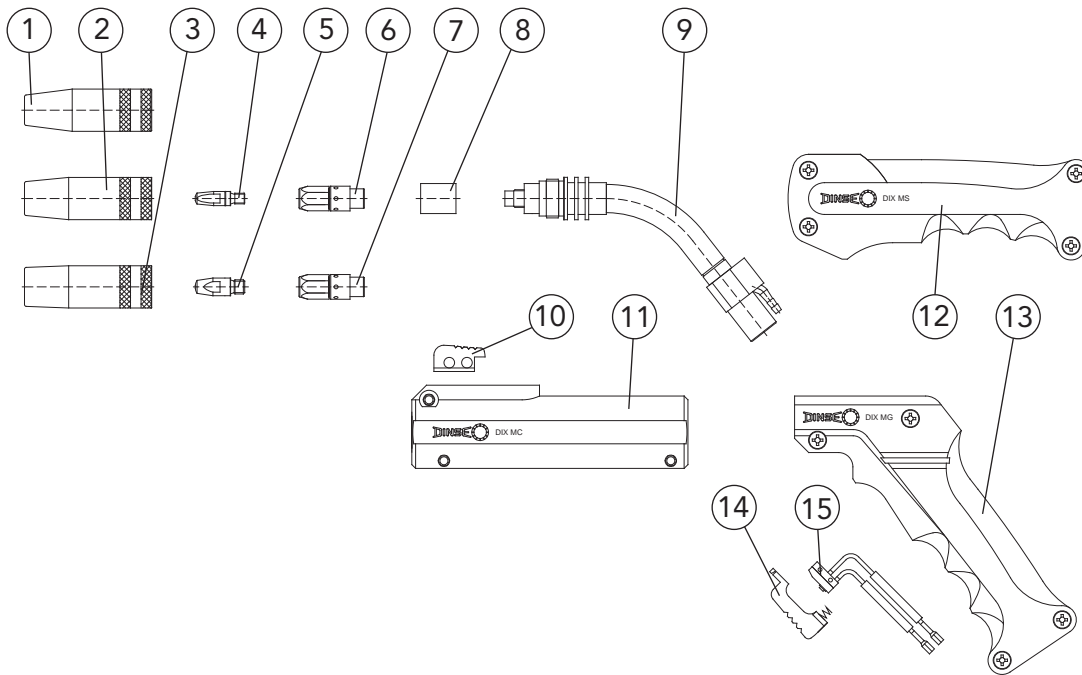


BLACKline Torch sets MS/MG/MC 330



Description	Dimension	Part name	Part number
1 Gas nozzle	ø 13 mm	DIX 1-2-313 TR	6290103130
2 Gas nozzle	ø 15 mm	DIX 1-2-315 TR	6290103150
3 Gas nozzle	ø 18 mm	DIX 1-2-318 TR	6290103180
4 Contact tip	M6 x 28 mm	DIX 3-2-__	6290300__
Contact tip	M6 x 28 mm	DIX 3-2-__ CR-ZR	6290330__
5 Contact tip	M8 x 28 mm	DIX 3-2-__ M8	6290301__
Contact tip	M8 x 28 mm	DIX 3-2-__ M8 CR-ZR	6290331__
6 Tip adapter	M6	DIX 4-2-K M6	629040010
7 Tip adapter	M8	DIX 4-2-K M8	629040110
8 Insulating sleeve		DIX 10-2	629100000
9 Torch neck	52°	DIX 6-2-330	6290603310
10 Trigger		DIX 9-2 C	629090030
11 Handle		DIX 7-2-303 C	629070330
12 Handle		DIX 7-2-303 S	629070310
13 Handle		DIX 7-2-303 G	629070300
14 Trigger		DIX 9-2	629090000
15 Micro switch		DIX 8-2	629080000

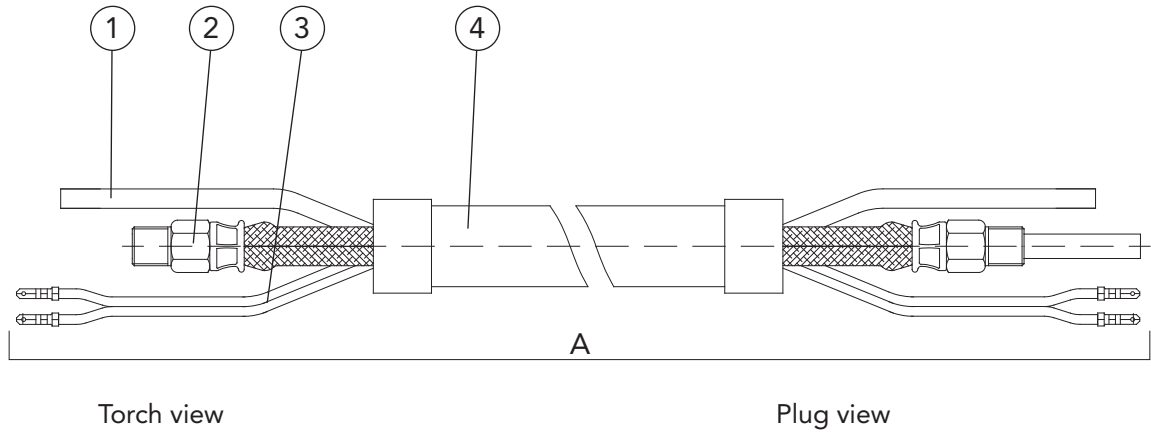
-- Enter the required wire diameter, e.g.: 10 = 1.0 mm or 12 = 1.2 mm.

- Standard equipment for wire diameter 1.0 mm steel with gas nozzle DIX 1-2-315 TR, contact tip DIX 3-2-1.0 M8, tip adapter DIX 4-2-K M8 and Liner DIX DS 4/1.8. Variants deviating of the standard fittings on request.



BLACKline Torch sets MS/MG/MC 330

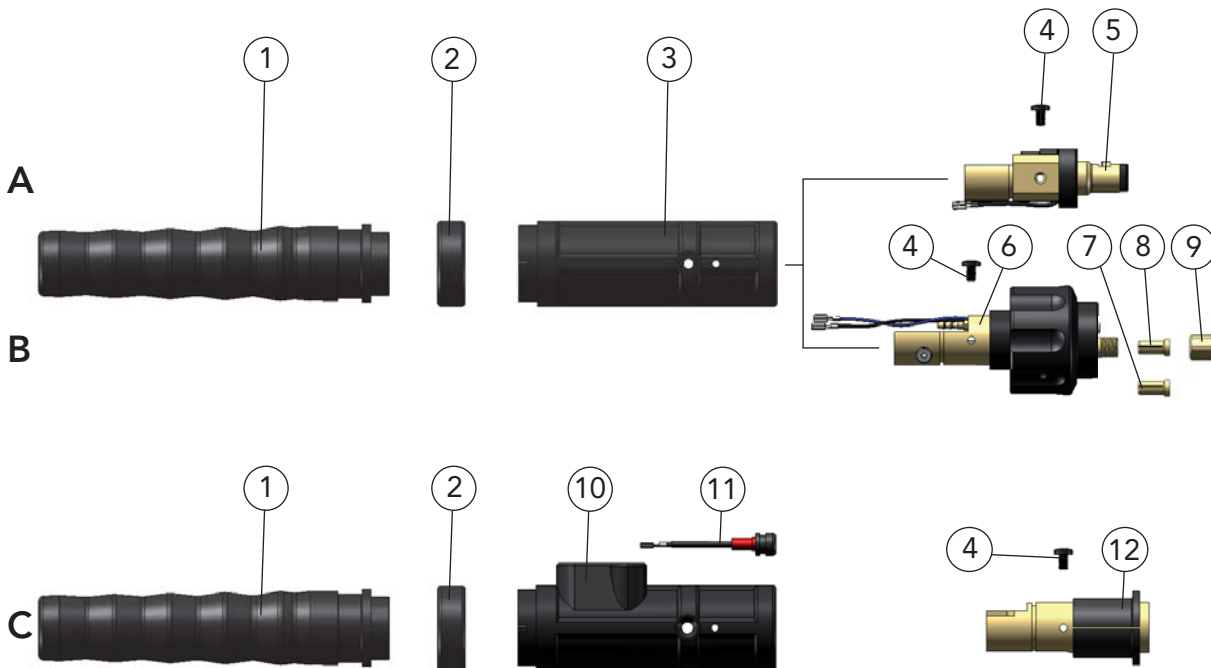
Supply hose



Description	Part name	Part number
A Supply hose	DIX VLM 300-__	6222003__
1 Gas hose	DIX VL 180-__	639186001__
2 Binary cable	DIX VLM 233-__	6292063__
3 Control wire	DIX VLM 211-__	6292110__
4 Cover hose	DIX VLM 330-__	6292313__

-- Enter the required length of the welding torch set, e.g.: 30 = 3.0 m or 40 = 4.0 m.
Standard length: 3.0 m and 4.0 m

BLACKline Torch sets MS/MG/MC 330 Plug



● You need a Power Pin / Power Pin Set for the compact plug DIX KCME 330 N (Pos. C). You will find the Power Pin / Power Pin Set that fits to your wire feeder in the chapter tools and accessories or you ask your DINSE consultant.

Description	Part name	Part number
A Plug	DIX KCME 330	624000330
B Plug	DIX KCME 330 SA	624000331
C Plug	DIX KCME 330 N	638900042
1 Plug sleeve	DIX ME 300 SM	629120000
2 Fixing ring	DIX 12-3-510 HR	6391250013
3 Plug housing	DIX ME 300 SG	629123300
4 Holding screw (10 pcs.)	DIX ME 300 HS	629070005
5 Plug insert	DIX ME 300 SE	639113004
6 Plug insert	DIX ME 300 SA	639113005
7 Clamp sleeve, without block for liner	DIX 27-2 MAP	629270041
8 Clamp sleeve, with block for liner	DIX 27-2 SA	629270040
9 Clamp nut	DIX 28-2 SA	629280040
10 Plug housing	DIX ME 600 SGN	6391250020
11 Plug connector	DIX CS 600 SGN	6391250021
12 Plug insert	DIX ME 300 N	639116077
Sealing cap, without picture	DIX 12-3-510 DK	901515135