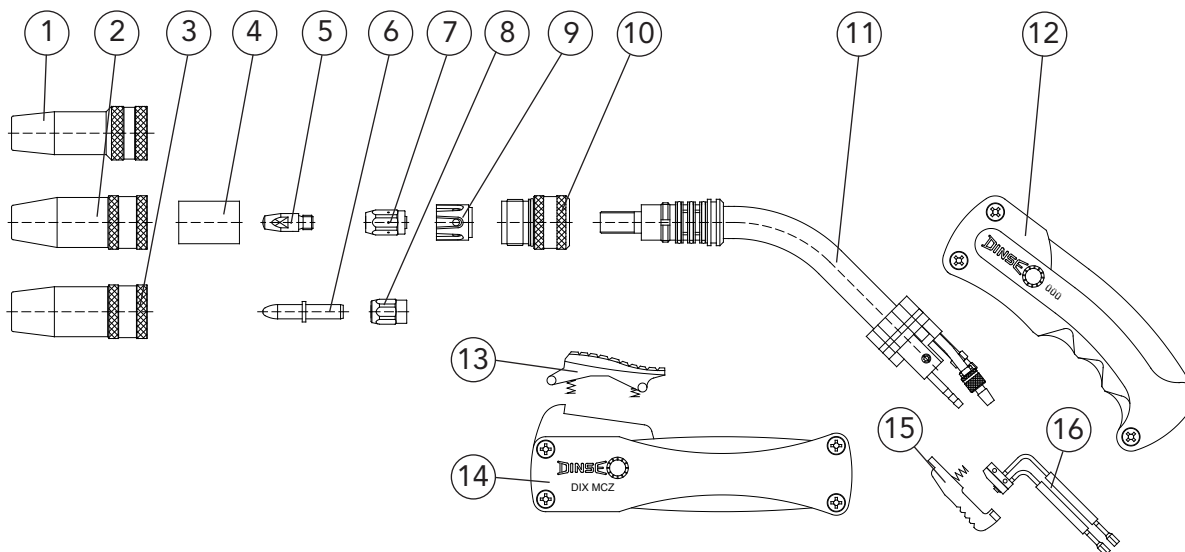


BLACKline Torch sets MSZ/MCZ 306



	Description	Dimension	Part name	Part number
1	Gas nozzle Outside diameter reduced	ø 15 mm	DIX 1-3-5415 AR	6390154155
2	Gas nozzle	ø 15 mm	DIX 1-3-5415 A	6390154150
3	Gas nozzle	ø 18 mm	DIX 1-3-5418 A	6390154180
4	Insulator For gas nozzle type A		DIX 2-3-500	6390250000
5	Contact tip	M8 x 28 mm	DIX 3-2-__ M8	6290301__
	Contact tip	M8 x 28 mm	DIX 3-2-__ M8 CR-ZR	6290331__
6	Contact tip	ø 8 x 45 mm	DIX 3-2-__ SR	6290354__
7	Tip adapter	M8	DIX GS 2-M8	628150008
8	Clamp nut		DIX 4-2-MAS	6390454000
9	Gas diffusor		DIX 10-3-540	6391054000
10	Screw adapter		DIX SAD 2-404/540	628140000
11	Torch neck	45°	DIX 6-2-306 Z	629061360
12	Handle		DIX 7-2-304 S	629070314
13	Trigger		DIX 9-2-304 C	629090305
14	Handle		DIX 7-2-304 C	629070334
15	Trigger		DIX 9-2-304 S	629090304
16	Micro switch		DIX 8-2	629080000

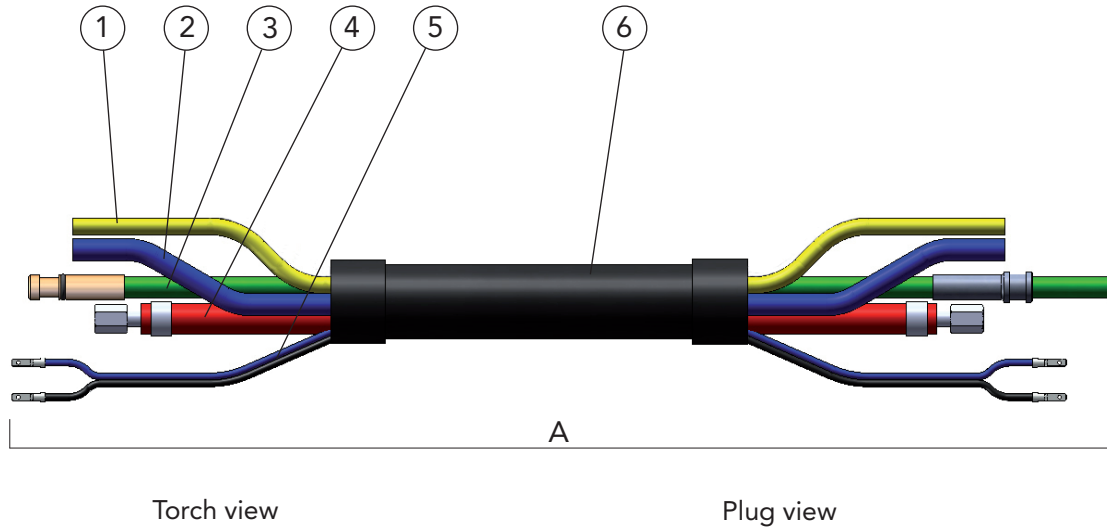
-- Enter the required wire diameter, e.g.: 12 = 1.2 mm or 16 = 1.6 mm.

- Standard equipment for wire diameter 1.2 mm steel, gas nozzle DIX 1-3-5418 A with screw adapter DIX SAD 2-404/540, contact tip DIX 3-2-1.2 M8, tip adapter DIX GS 2-M8, liner DIX DS 4/2.2.

Cooling jacket with direct liquid cooling for extreme cases of application. The order designation you will find at accessories for BLACKline torches at the end of this chapter. Variants deviating of the standard fittings on request.



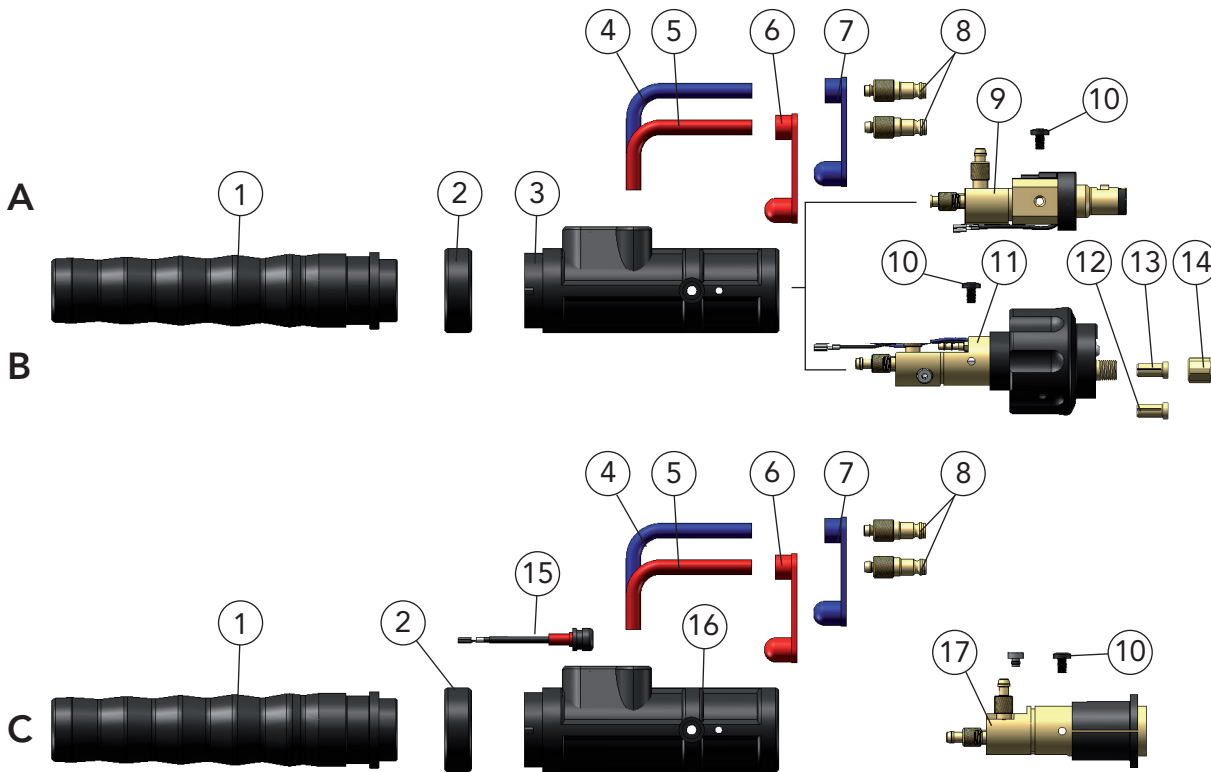
BLACKline Torch sets MSZ/MCZ 306 Supply hose



Description	Part name	Part number
A Supply hose	DIX VLMZ 300-__	6223003__
1 Gas hose	DIX VL 180-__	639186001__
2 Water hose	DIX VL 190-__ BLAU	639196001__
3 Conduit hose	DIX VLM 201-__ PUSD	6292013__
4 Combi cable	DIX 22-2-303-__	6292213__
5 Control wire	DIX VLM 211-__	6292110__
6 Cover hose	DIX VLM 330-__	6292313__

-- Enter the required length of the welding torch set, e.g.: 30 = 3.0 m or 40 = 4.0 m.
Standard length: 3.0 m and 4.0 m

BLACKline Torch sets MSZ/MCZ 306 Plug



NOTE You need a Power Pin / Power Pin Set for the compact plug DIX KCZME 330 N (Pos. C). You will find the Power Pin / Power Pin Set that fits to your wire feeder in the chapter tools and accessories or you ask your DINSE consultant.

Description	Dimension	Part name	Part number
A Plug		DIX KCZME 330 Z	624100330
B Plug		DIX KCZME 330 SAZ	624100331
C Plug		DIX KCZME 330 N	638900043
1 Plug sleeve		DIX ME 300 SM	629120000
2 Fixing ring		DIX 12-3-510 HR	6391250013
3 Plug housing		DIX 12-3-510 SG	6391250011
4 Connection hose, blue	0.60 m	DIX VL 170 BLAU	629171003
5 Connection, red	0.60 m	DIX VL 171 ROT	629171004
6 Cap, red		DIX VL 173	629172002
7 Cap, blue		DIX VL 172	629172001
8 Water plug	ø 5.0 mm	DIX 16-2	629160000
9 Plug insert		DIX ME 300 SEZ	639116064
10 Holding screw (10 pcs.)		DIX ME 300 HS	629070005
11 Plug insert		DIX ME 300 SAZ	639116061
12 Clamp sleeve, without block for liner		DIX 27-2 MAP	629270041
13 Clamp sleeve, with block for liner		DIX 27-2 SA	629270040
14 Clamp nut		DIX 28-2 SA	629280040
15 Plug connector		DIX CS 600 SGN	6391250021
16 Plug housing		DIX ME 600 SGN	6391250020
17 Plug insert		DIX ME 600 N	639116076

