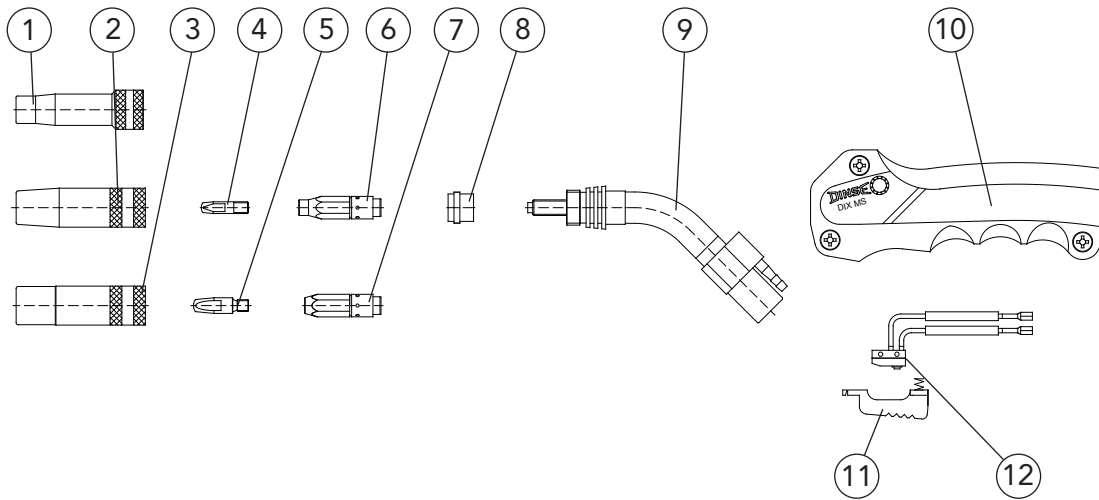


## BLACKline Torch sets MSZ 230

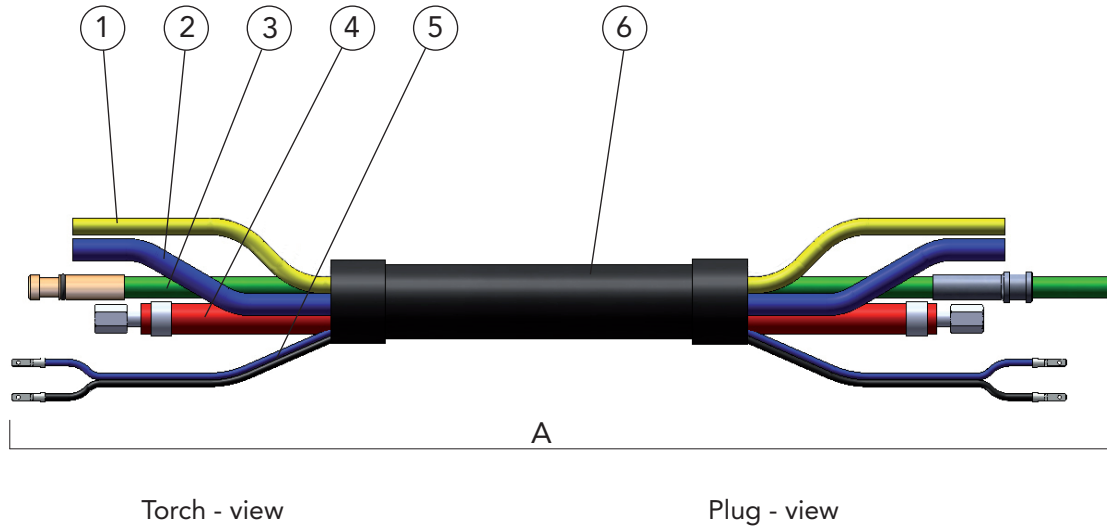


Description	Dimension	Part name	Part number
1 Gas nozzle	ø 11 mm	DIX 1-1-311 TRR	6190106110
2 Gas nozzle	ø 13 mm	DIX 1-1-312 TR	6190103120
3 Gas nozzle	ø 16 mm	DIX 1-1-316 TR	6190103160
4 Contact tip	M6 x 24 mm	DIX 3-1-__	6190300__
5 Contact tip	M6 x 28 mm	DIX 3-2-__	6290300__
Contact tip	M6 x 28 mm	DIX 3-2-__ CR-ZR	6290330__
6 Tip adapter	M6	DIX 4-1-L	619040020
7 Tip adapter	M6	DIX 4-1-K	619040010
8 Insulating sleeve		DIX 10-1-222	619100202
9 Torch neck	45°	DIX 6-1-230 Z	6190610234
10 Handle		DIX 7-2-303 S	629070310
11 Trigger		DIX 9-2	629090000
12 Micro switch		DIX 8-2	629080000

\_\_ Enter the required wire diameter, eg.: 08 = 0.8 mm or 10 = 1.0 mm.

- Standard equipment for wire diameter 1.0 mm steel with gas nozzle DIX 1-1-312 TR, contact tip DIX 3-1-1.0, Sockel DIX 4-1-K and liner DIX DS 4/1.8. Variants deviating of the standard fittings on request.

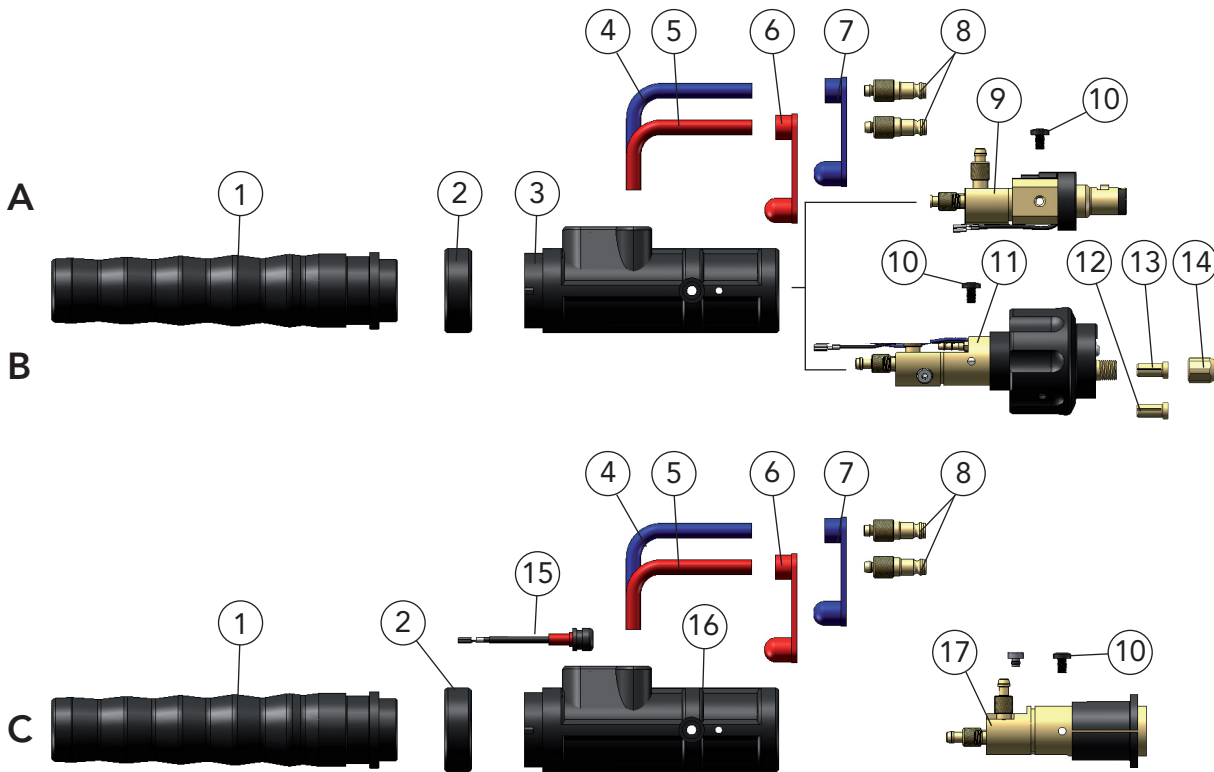
## BLACKline Torch sets MSZ 230 Supply hose



Description	Part name	Part number
A Supply hose	DIX VLMZ 300-__	6223003__
1 Gas hose	DIX VL 180-__	639186001__
2 Water hose	DIX VL 190-__ BLAU	639196001__
3 Conduit hose	DIX VLM 201-__ PUSD	6292013__
4 Combi cable	DIX 22-2-303-__	6292213__
5 Control wire	DIX VLM 211-__	6292110__
6 Cover hose	DIX VLM 330-__	6292313__

-- Enter the required length of the welding torch set, e.g.: 30 = 3.0 m or 40 = 4.0 m.  
Standard length: 3.0 m and 4.0 m

## BLACKline Torch sets MSZ 230 Plug



**NOTE** You need a Power Pin / Power Pin Set for the compact plug DIX KCZME 330 N (Pos. C). You will find the Power Pin / Power Pin Set that fits to your wire feeder in the chapter tools and accessories or you ask your DINSE consultant.

Description	Dimension	Part name	Part number
A Plug		DIX KCZME 330 Z	624100330
B Plug		DIX KCZME 330 SAZ	624100331
C Plug		DIX KCZME 330 N	638900043
1 Plug sleeve		DIX ME 300 SM	629120000
2 Fixing ring		DIX 12-3-510 HR	6391250013
3 Plug housing		DIX 12-3-510 SG	6391250011
4 Connection, blue	0.60 m	DIX VL 170 BLAU	629171003
5 Connection, red	0.60 m	DIX VL 171 ROT	629171004
6 Cap, red		DIX VL 173	629172002
7 Cap, blue		DIX VL 172	629172001
8 Water plug	ø 5.0 mm	DIX 16-2	629160000
9 Plug insert		DIX ME 300 SEZ	639116064
10 Holding screw (10 pcs.)		DIX ME 300 HS	629070005
11 Plug insert		DIX ME 300 SAZ	639116061
12 Clamp sleeve, without block for liner		DIX 27-2 MAP	629270041
13 Clamp sleeve, with block for liner		DIX 27-2 SA	629270040
14 Clamp nut		DIX 28-2 SA	629280040
15 Plug connector		DIX CS 600 SGN	6391250021
16 Plug housing		DIX ME 600 SGN	6391250020
17 Plug insert		DIX ME 600 N	639116076

